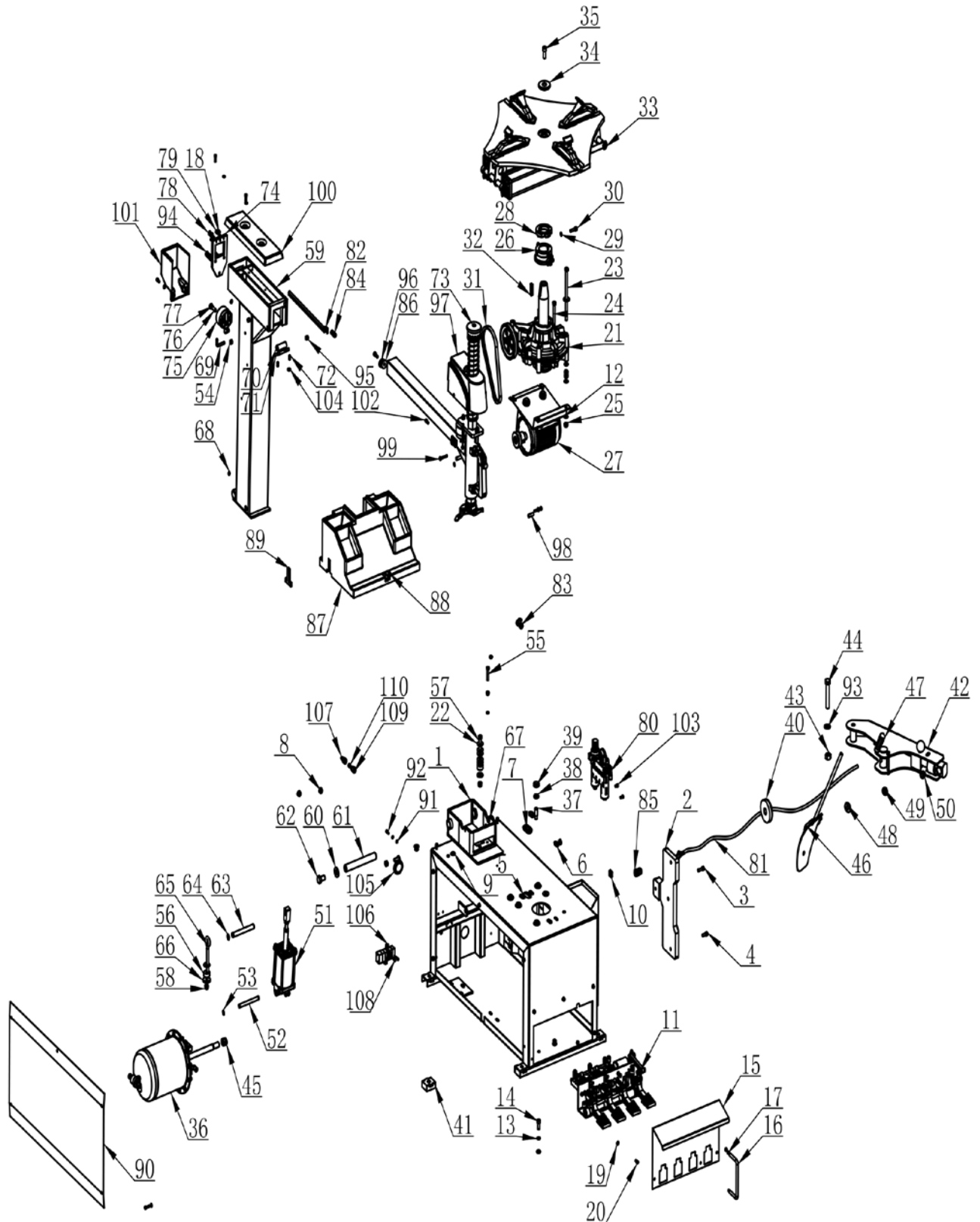


DM 1000

MONTE DEMONTE PNEUS AUTOMATIQUE 10"-24" 1 VITESSE

AUTOMATIC TIRE CHANGER 10"-24" ONE-SPEED





DM 1000

MONTE DEMONTE PNEUS AUTOMATIQUE 10"-24" 1 VITESSE

AUTOMATIC TIRE CHANGER 10"-24" ONE-SPEED

ITEM	DESCRIPTION.	QT. Y
1	BODY	1
2	RUBBER PAD PLATE	1
3	INNER HEXA CYLINDRICAL SCREW	1
4	INNER HEXA CYLINDRICAL SCREW	4
5	PLUG C	2
6	PLUG A	2
7	PLUG B	1
8	HELPER RUBBE PLUG	3
9	STOP-UP	2
10	STOP-UP	1
11	PEDAL ASSEMBLY	1
12	FLAT WASHER	16
13	STANDARD SPRING WASHER	2
14	INNER HEXA CYLINDRICAL SCREW	2
15	PROTECTIVE COVER	1
16	PROTECTIVE ROD	1
17	STANDARD SPRING WASHER	2
18	HEXANGULAR NUT	4
19	FLAT WASHER	19
20	INNER HEXA CYLINDRICAL SCREW	5
21	GEARBOX ASSEMBLY	1
22	large washer C grade	13
23	HEXANGULAR BOLT	4
24	HEXANGULAR BOLT	2
25	HEXANGULAR NUT	16
26	ROTATING UNION	1
27	MOTOR	1
28	CLAMP RING	1
29	STANDARD SPRING WASHER	3
30	INNER HEXA CYLINDRICAL SCREW	1
31	BELT	1
32	COMMON FLAT KEY	1
33	TURNTABLE ASSEMBLY	1
34	PRESS COVER	1
35	INNER HEXA CYLINDRICAL SCREW	1
36	BEAD BREAKER CYLINDER ASSEMBLY	1
37	SCREWS M14X42	2
38	HEXANGULAR THIN NUT	2
39	SEALED COVER	1
40	WESHER	1

DM 1000

MONTE DEMONTE PNEUS AUTOMATIQUE 10"-24"
1 VITESSE

AUTOMATIC TIRE CHANGER 10"-24" ONE-SPEED

ITEM	DESCRIPTION.	QT. Y
41	RUBBER FOOT	4
42	BEAD BREAKER	1
43	HEXANGULAR NUT	1
44	HEXANGULAR BOLT	1
45	NUT M18X1.5	1
46	BEAD BREAKER BLADE	1
47	RUBBER COVER	1
48	WASHER	1
49	WAVE-FORM SPRING WASHER	1
50	1-TYPE PREVAILING TORQUE TYPE HEXAGON LOCK NUT	1
51	PULL-OUT CYLINDER D80X80	1
52	PIN SHAFT	1
53	SHAFT ELATIC BIG RETAINING RING A-TYPE	2
54	HEXANGULAR NUT	4
55	HEXANGULAR BOLT	2
56	WASHER $\Phi 30 \times \Phi 10 \times 15$	2
57	HEXANGULAR BOLT	1
58	1-TYPE PREVAILING TORQUE TYPE HEXAGON LOCK NUT	2
59	COLUMN WELDING DRAWING	1
60	WASHER	2
61	ROTATION SHAFT	1
62	HEXANGULAR BOLT	2
63	PULL-OUT SHAFT	1
64	SHAFT ELATIC BIG RETAINING RING A-TYPE	2
65	CONNECTION ROD	1
66	WASHER	1
67	BOLT	2
68	OIL CUP M6	1
69	INFLATING GUN HOOK	1
70	ROTATING SPACER	1
71	SUPPORT SHAFT	1
72	INNER HEXA FLAT TERMINUS SET SCREW	2
73	HORIZONTAL ARM ASSEMBLY	1
74	QUADRIC LOCK PLATE WELDING	1
75	LOCKING CYLINDER ASSY	1
76	INNER HEXA FLAT TERMINUS SET SCREW	1
77	HEXA THIN NUT	1
78	HEXANGULAR BOLT	1
79	HEXANGULAR BOLT	2
80	AIR REGULATOR ASSEMBLY	1



DM 1000

MONTE DEMONTE PNEUS AUTOMATIQUE 10"-24" 1 VITESSE

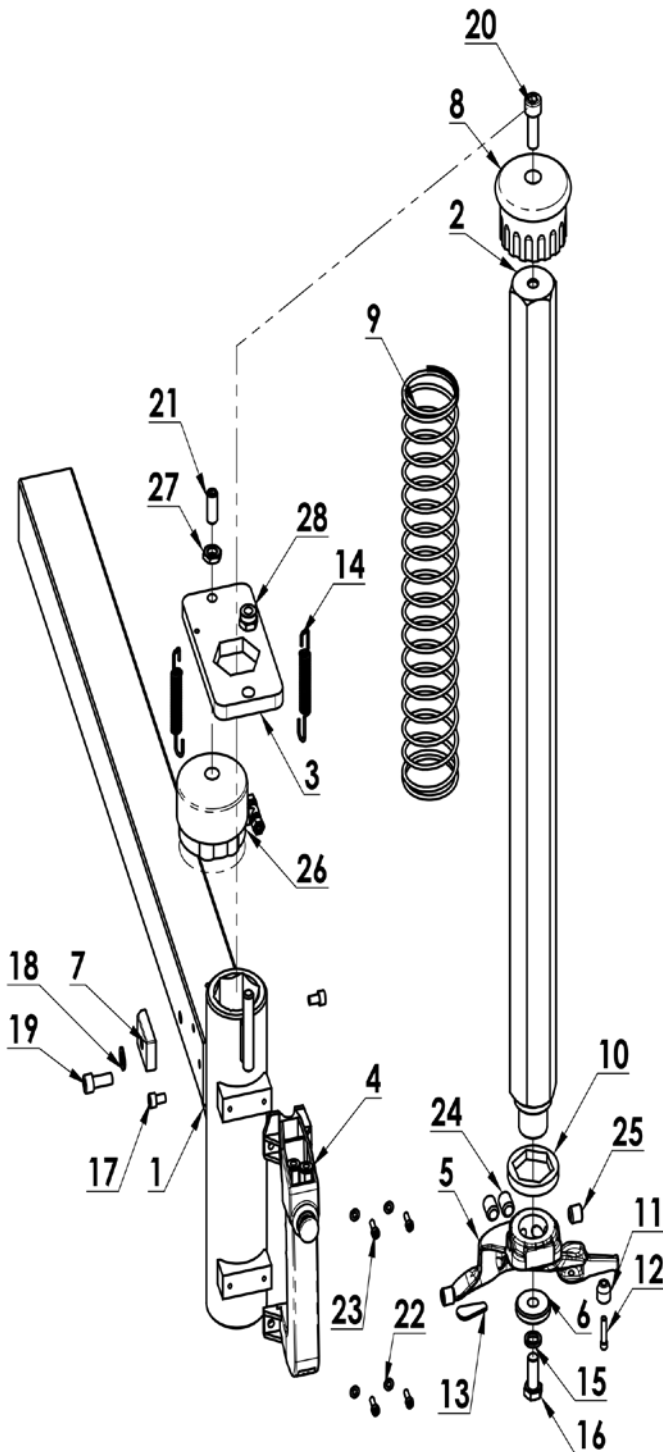
AUTOMATIC TIRE CHANGER 10"-24" ONE-SPEED

ITEM	DESCRIPTION.	QT. Y
81	CABLE	1
82	AIR HOSE CHUTE	1
83	DIFFERENT DIA OF UNION TEE	1
84	UNION STRAIGHT	1
85	CABLE CONNECTOR	1
86	CUSHION	2
87	PROTECTIVE COVER	1
88	INNER HEXA CYLINDRICAL SCREW	10
89	T-PLUG	1
90	SIDE PANEL	1
91	FLAT WASHER	2
92	HEXANGULAR BOLT	1
93	FLAT WASHER	1
94	PRESS SPRING	2
95	INNER HEXA FLAT TERMINUS SET SCREW	2
96	RUBBER WASHER	1
97	PROTECTION COVER	1
98	PROTECTIVE HOOD LOCK BUSHING	2
99	CROSS PANHEAD SCREW	2
100	PROTECTIVE COVER	1
101	PROTECTIVE COVER	1
102	INNER HEXA CYLINDRICAL SCREW	2
103	INNER HEXA CYLINDRICAL SCREW	2
104	HEXANGULAR THIN NUT	2
105	CUSHION BUSHING	1
106	VALVE	1
107	AIR SUPPLY CONNECTOR	1
108	INNER HEXA CYLINDRICAL SCREW	2
109	MALE STRAIGHT	1
110	JOINT SEALING GASKET	1

DM 1000

MONTE DEMONTE PNEUS AUTOMATIQUE 10"-24" 1 VITESSE

AUTOMATIC TIRE CHANGER 10"-24" ONE-SPEED

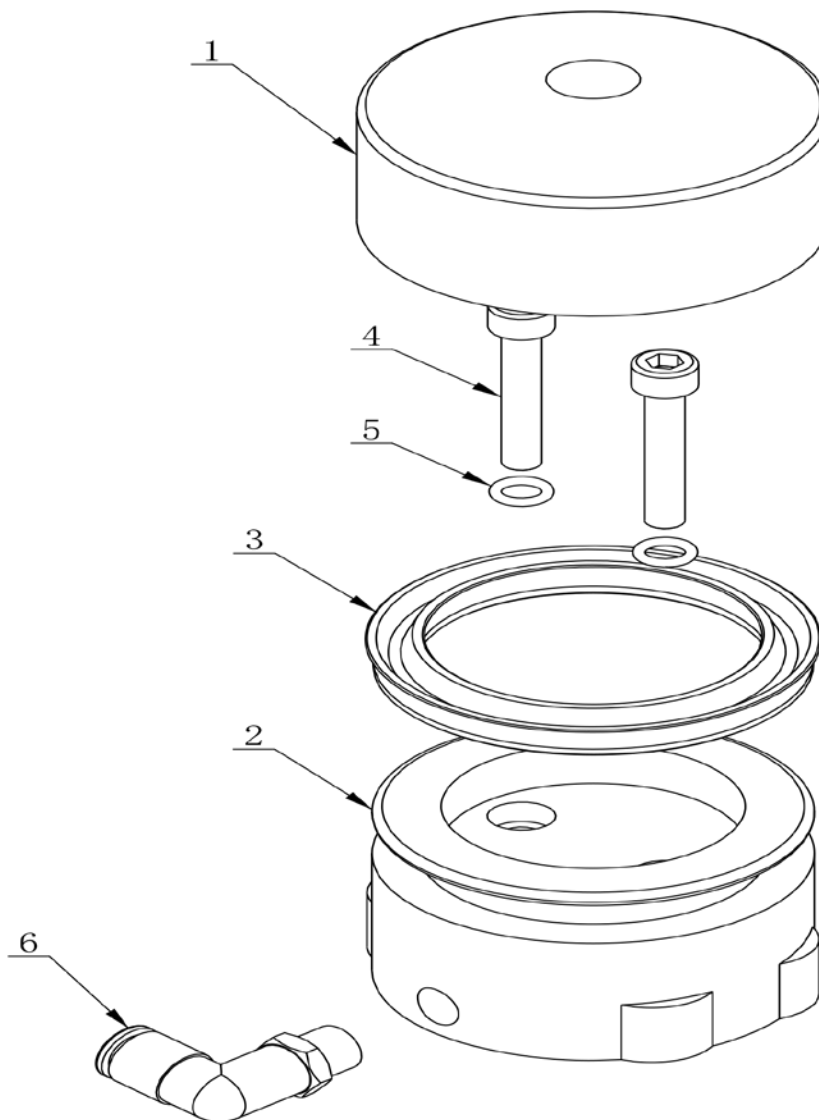


ITEM	DESCRIPTION.	QT. Y
1	HORIZONTAL ARM WELDING	1
2	HEXANGULAR SHAFT	1
3	HEXANGULAR LOCK PLATE	1
4	HANDLE CONTROLLING VALVE	1
5	DEMOUNTING HEAD	1
6	PRESS WASHER	1
7	POSITIONING BLOCK	1
8	VERTICAL SHAFT COVER	1
9	VERTICAL SHAFT SPRING	1
10	SHOCK ABSORBER WASHER	1
11	ROLLER	1
12	ROLLER BOLT	1
13	PLASTIC COVER	1
14	SPRING	2
15	STANDARD SPRING WASHER	1
16	HEXANGULAR BOLT	1
17	INNER HEXA CYLINDRICAL SCREW	2
18	FLAT WASHER	1
19	INNER HEXA CYLINDRICAL SCREW	1
20	INNER HEXA CYLINDRICAL SCREW	1
21	INNER HEXA FLAT TERMINUS SET SCREW	1
22	FLAT WASHER	4
23	INNER HEXA CYLINDRICAL SCREW	4
24	INNER HEXA FLAT TERMINUS SET SCREW	2
25	INNER HEXA FLAT TERMINUS SET SCREW	2
26	LOCKING CYLINDER ASSY	1
27	HEXA THIN NUT	1
28	1-TYPE PREVAILING TORQUE TYPE HEXAGON LOCK NUT	1

DM 1000

MONTE DEMONTE PNEUS AUTOMATIQUE 10"-24" 1 VITESSE

AUTOMATIC TIRE CHANGER 10"-24" ONE-SPEED

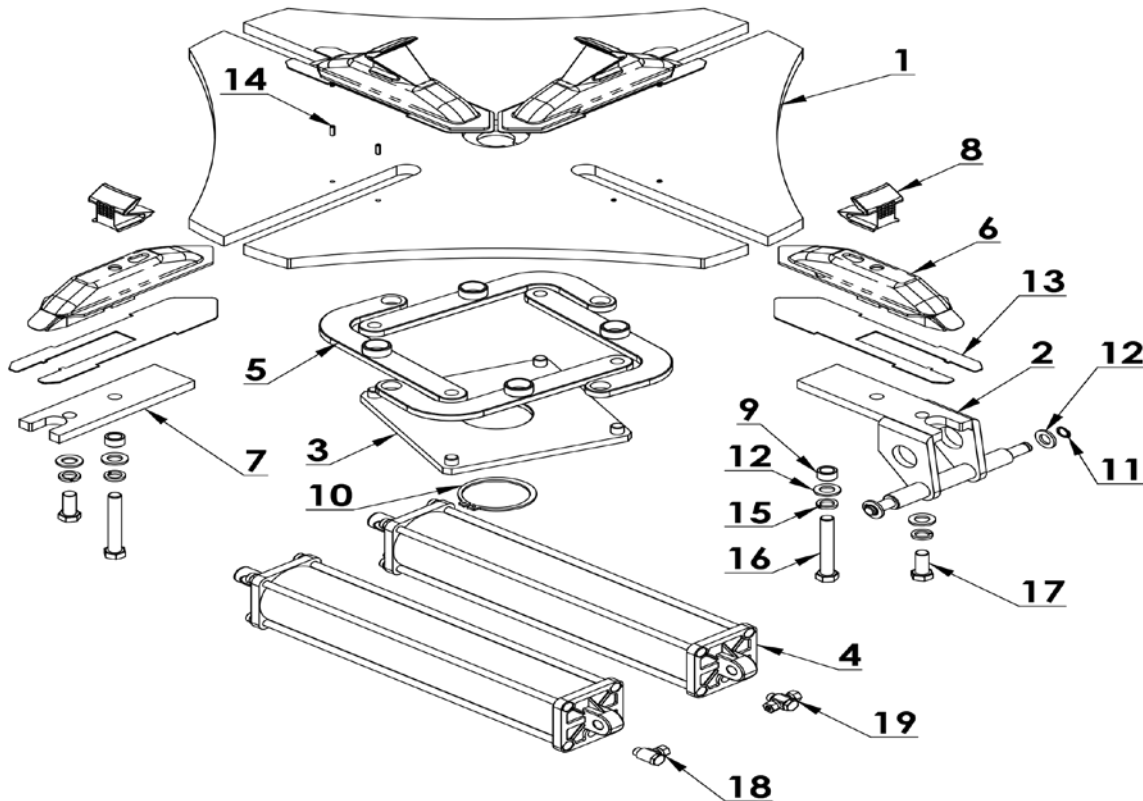


ITEM	DESCRIPTION.	QT. Y
1	LOCK TURNTABLE CYLINDER HEAD	1
2	LOCK CYLINDER BODY	1
3	Y-RING	1
4	INNER HEXA CYLINDRICAL SCREW	2
5	HYDRAULIC-PNEUMATIC RUBBER O-RING G TYPE	2
6	MALE ELBOW	1

DM 1000

MONTE DEMONTE PNEUS AUTOMATIQUE 10"-24" 1 VITESSE

AUTOMATIC TIRE CHANGER 10"-24" ONE-SPEED

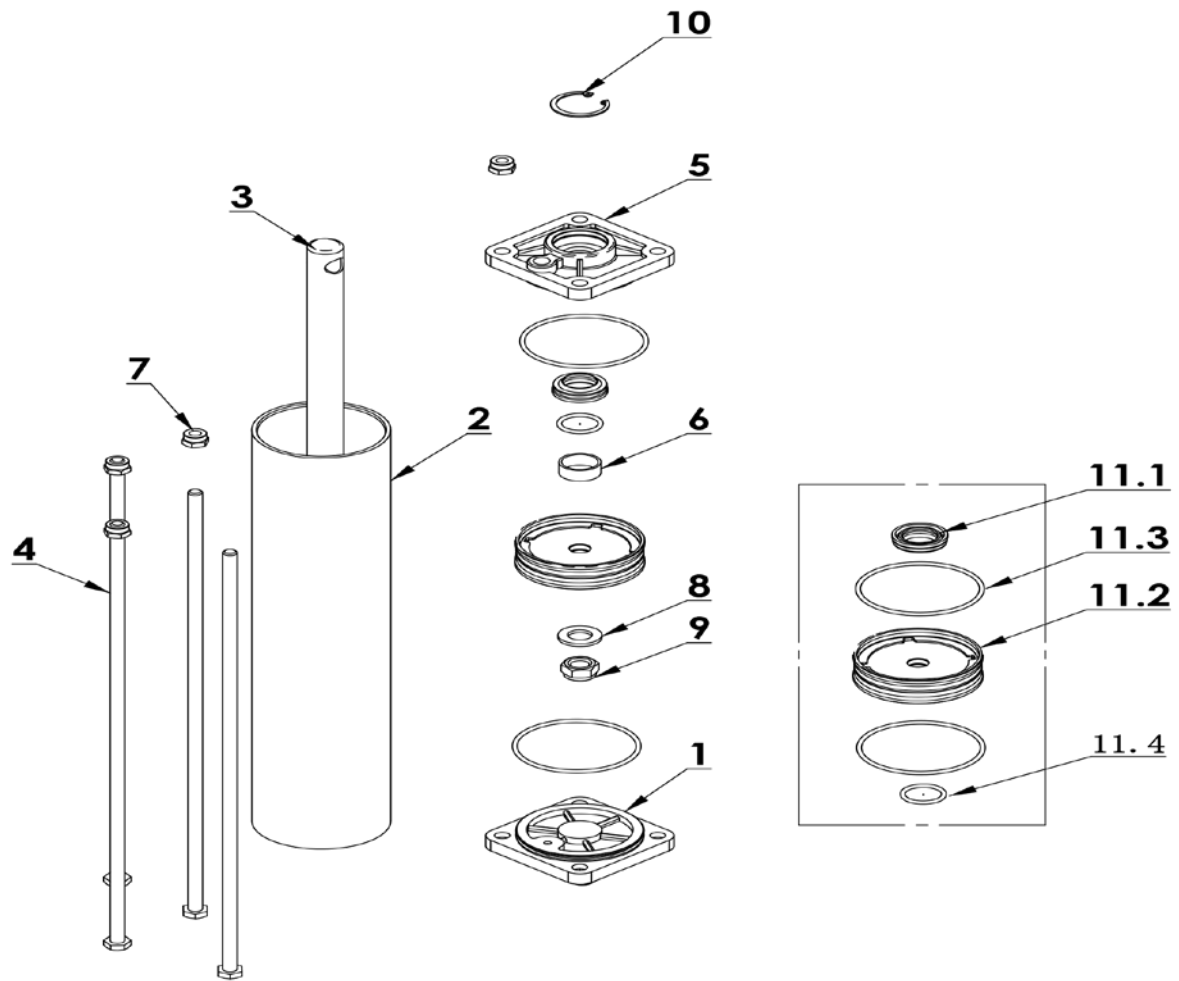


ITEM	DESCRIPTION.	QT. Y
1	TURN TALBE	1
2	BRACKET-CYLINDER	2
3	SQUARE TURNTABLE	1
4	CYLINDER ASSEMBLY	2
5	CONNECTION PLATE	4
6	SLIDE COVER	4
7	BOTTOM CHUTE PRESS PLATE	2
8	CLAMP	4
9	SPACER	4
10	SHAFT ELATIC BIG RETAINING RING A-TYPE	1
11	SHAFT ELATIC BIG RETAINING RING A-TYPE	4
12	FLAT WASHER	12
13	WEAR-RESISTANCE SPACER	4
14	ELASTIC CYLINDRICAL PIN HEAVY	8
15	STANDARD SPRING WASHER	8
16	HEXANGULAR BOLT	4
17	HEXANGULAR BOLT	4
18	HINGE ELBOW $\Phi 8$ G1/8"	2
19	HINGE ELBOW $\Phi 8$	2

DM 1000

MONTE DEMONTE PNEUS AUTOMATIQUE 10"-24" 1 VITESSE

AUTOMATIC TIRE CHANGER 10"-24" ONE-SPEED

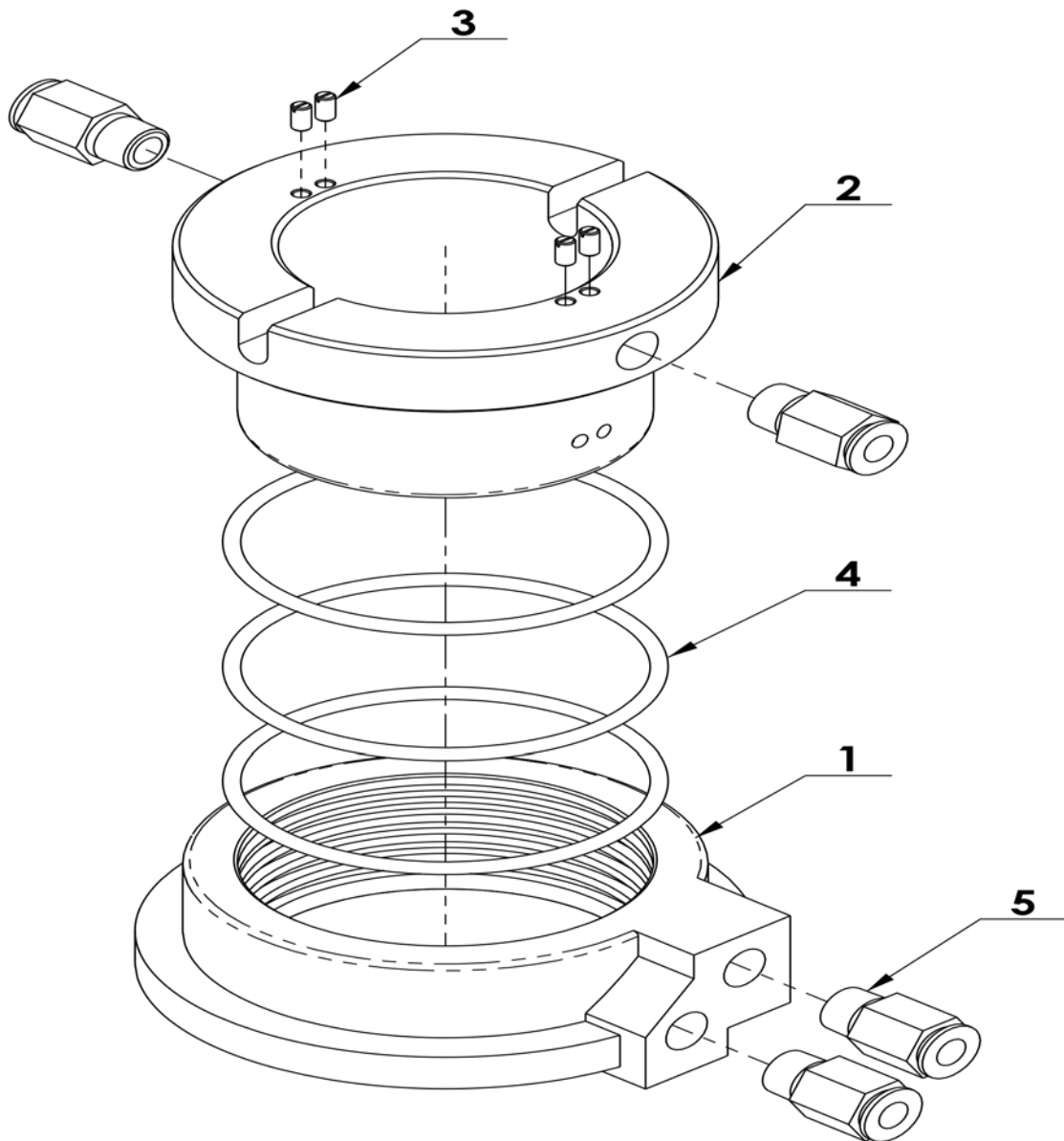


ITEM	DESCRIPTION.	QT. Y
1	REAR COVER	1
2	SLEEVE-CYLNDR 70	1
3	SHAFT-CLYNDR	1
4	BOLT	4
5	FRONT COVER	1
6	BEARING-SLIDE	1
7	1-TYPE PREVAILING TORQUE TYPE HEXAGON LOCK NUT	4
8	FLAT WASHER	1
9	1- TYPE PREVAILING TORQUE TYPE HEXAGON LOCK NUT	1
10	ELASTIC RETAINING RING A-TYPE	1
11	CYCLINDER SEALING PARTS ASSEMBLY	1
11. 1	SEAL-ROD, CYLNDR	1
11. 2	PISTON-W/WSHR, ASSY	1
11. 3	HYDRAULIC-PNEUMATIC RUBBER O-RING G TYPE	2
11. 4	HYDRAULIC-PNEUMATIC RUBBER O-RING G TYPE	1

DM 1000

MONTE DEMONTE PNEUS AUTOMATIQUE 10"-24" 1 VITESSE

AUTOMATIC TIRE CHANGER 10"-24" ONE-SPEED

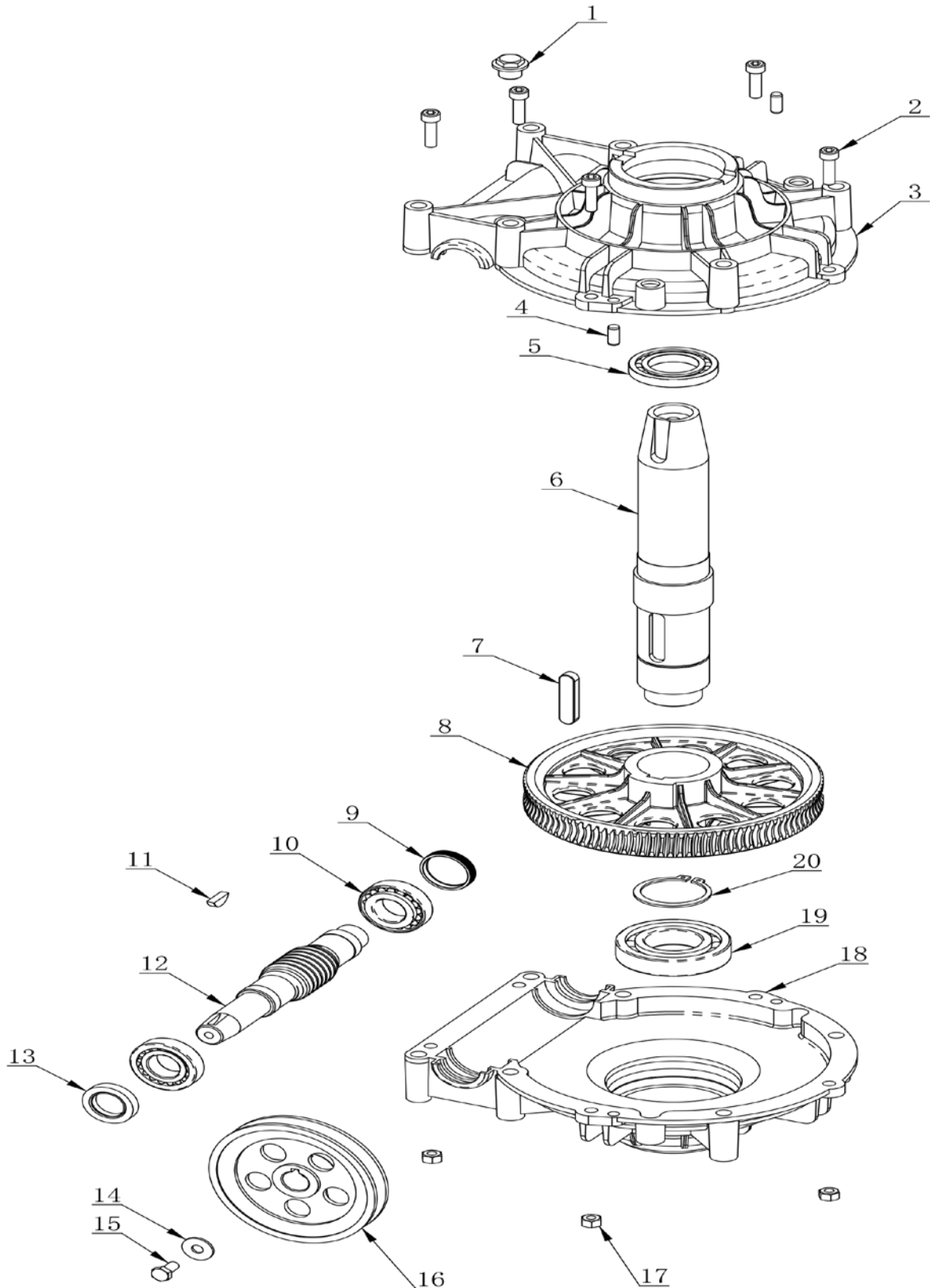


ITEM	DESCRIPTION.	QT. Y
1	AIR GUIDE EXTERNAL BUSHING	1
2	AIR GUIDE ROTATION BUSHING	1
3	SLOTTED FLATTEN HEAD SET SCREW	4
4	HYDRAULIC-PNEUMATIC RUBBER O-RING G TYPE	3
5	MALE STRAIGHT	4

DM 1000

MONTE DEMONTE PNEUS AUTOMATIQUE 10"-24" 1 VITESSE

AUTOMATIC TIRE CHANGER 10"-24" ONE-SPEED



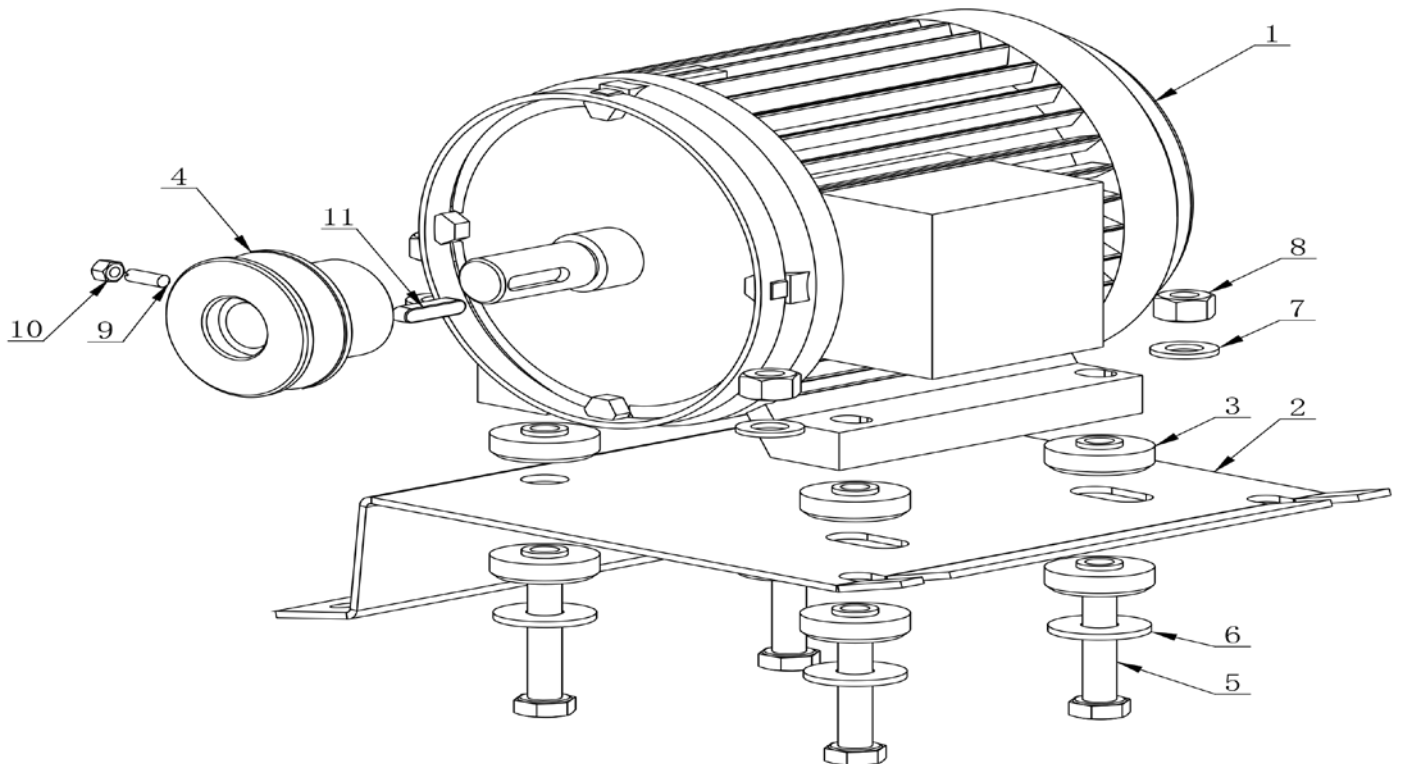
DM 1000**MONTE DEMONTE PNEUS AUTOMATIQUE 10"-24"
1 VITESSE****AUTOMATIC TIRE CHANGER 10"-24" ONE-SPEED**

ITEM	DESCRIPTION	QTY
1	BOLT	1
2	INNER HEXA CYLINDRICAL SCREW	5
3	GEARBOX TOP	1
4	CYLINDRICAL PIN	2
5	DEEP GROOVE BALL BEARINGS	1
6	WORM SHAFT	1
7	COMMON FLAT KEY	1
8	WORM	1
9	CAP	1
10	CYLINDRICAL BALL BEARING	2
11	COMMON SEMI-CIRCULAR KEY	1
12	WORM ROD	1
13	SEALED RING	1
14	LARGE WASHER C GRADE	1
15	HEXANGULAR BOLT	1
16	BELT PULLEY	1
17	HEXANGULAR NUT	5
18	GEARBOX TOP	1
19	DEEP GROOVE BALL BEARINGS	1
20	SHAFT ELATIC BIG RETAINING RING A-TYPE	1

DM 1000

MONTE DEMONTE PNEUS AUTOMATIQUE 10"-24" 1 VITESSE

AUTOMATIC TIRE CHANGER 10"-24" ONE-SPEED

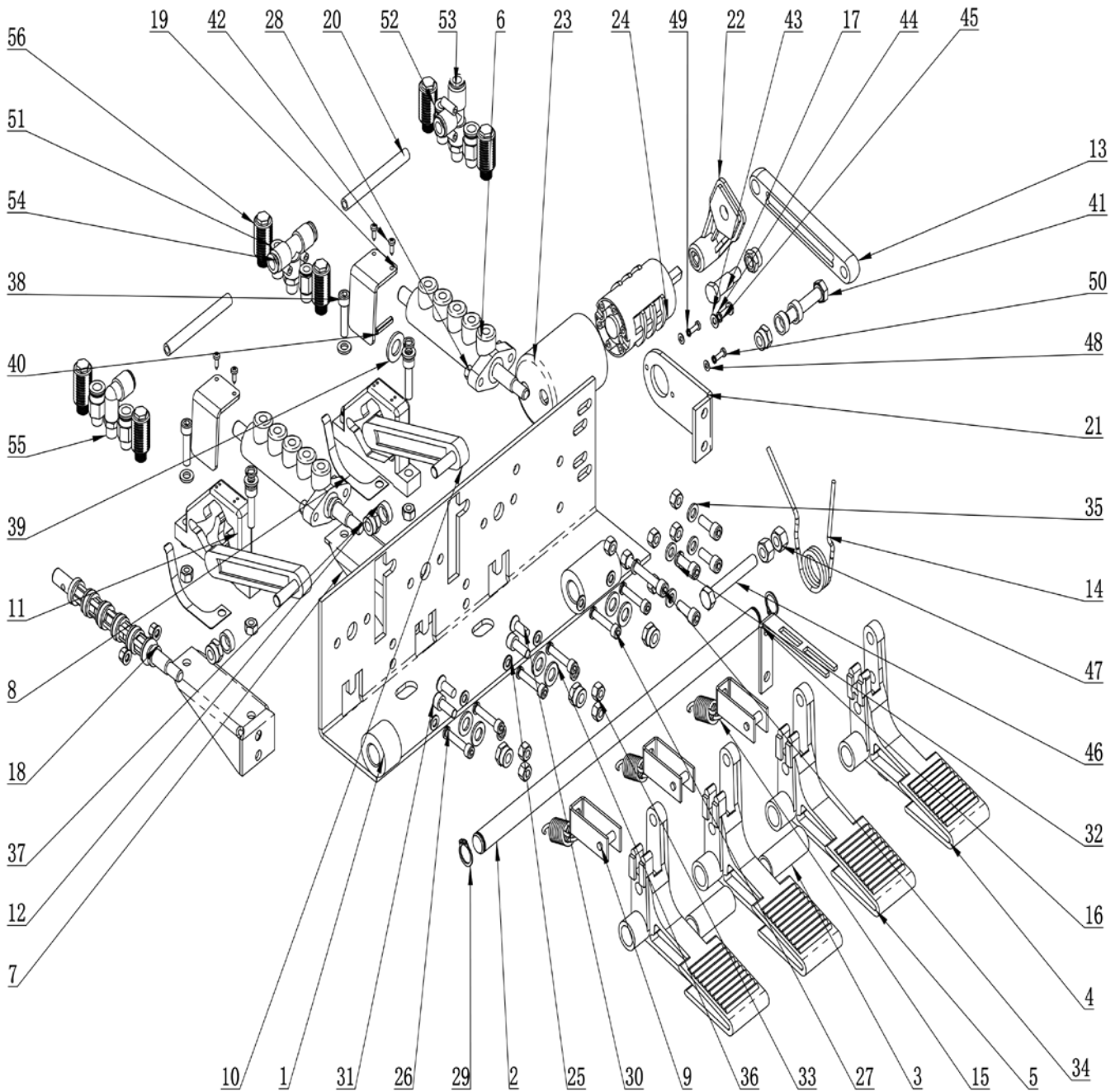


ITEM	DESCRIPTION.	QT. Y
1	MOTOR (0.75KW 380V 50Hz 3P)	1
2	MOTOR SUPPORT	1
3	RUBBER WASHER	8
4	220V MOTOR BELT PULLEY (Φ58X40)	1
5	HEXANGULAR BOLT	4
6	LARGE WASHER C GRADE	4
7	FLAT WASHER	4
8	HEXANGULAR NUT	4
9	SLOTTED CONIC HEAD SET SCREW	1
10	HEXANGULAR NUT	1
11	COMMON FLAT KEY	1

DM 1000

MONTE DEMONTE PNEUS AUTOMATIQUE 10"-24" 1 VITESSE

AUTOMATIC TIRE CHANGER 10"-24" ONE-SPEED



DM 1000

MONTE DEMONTE PNEUS AUTOMATIQUE 10"-24"
1 VITESSE

AUTOMATIC TIRE CHANGER 10"-24" ONE-SPEED

ITEM	DESCRIPTION.	QT. Y
1	PEDAL SUPPORT WELDING	1
2	BOTTOM SHAFT	1
3	SPACER	2
4	PEDAL	1
5	PEDAL	3
6	VALVE	3
7	CAM BRACKET WELDING	2
8	SPRING PLATE	2
9	BRACKET RIVETING	3
10	CAM CONNECTING ROD	2
11	CAM	2
12	SPACER	4
13	CONNECTION ROD	1
14	TORSION SPRING	1
15	SPRING	3
16	TORSION SPRING BRACKET	1
17	ROTATION SHAFT	1
18	SPACER	2
19	CAM BAFFLE PLATE	2
20	HOSE	2
21	SWITCH SUPPORT	1
22	REVERSE LEVER	1
23	SWITCH COVER	1
24	SWITCH	1
25	FLAT WASHER	12
26	STANDARD SPRING WASHER	6
27	INNER HEXA CYLINDRICAL SCREW	6
28	HEXANGULAR NUT	6
29	SHAFT ELATIC BIG RETAINING RING A-TYPE	2
30	CROSS COUNTERSUNK SCREW STEEL 4.8 GRADE	2
31	INNER HEXA CYLINDRICAL SCREW	6
32	STANDARD SPRING WASHER	11
33	HEXANGULAR NUT	14
34	INNER HEXA CYLINDRICAL SCREW	1
35	FLAT WASHER	8
36	FLAT WASHER	6
37	I-TYPE PREVAILING TORQUE TYPE HEXAGON LOCK NUT M8	7
38	INNER HEXA CYLINDRICAL SCREW	4
39	FLAT WASHER	1

DM 1000

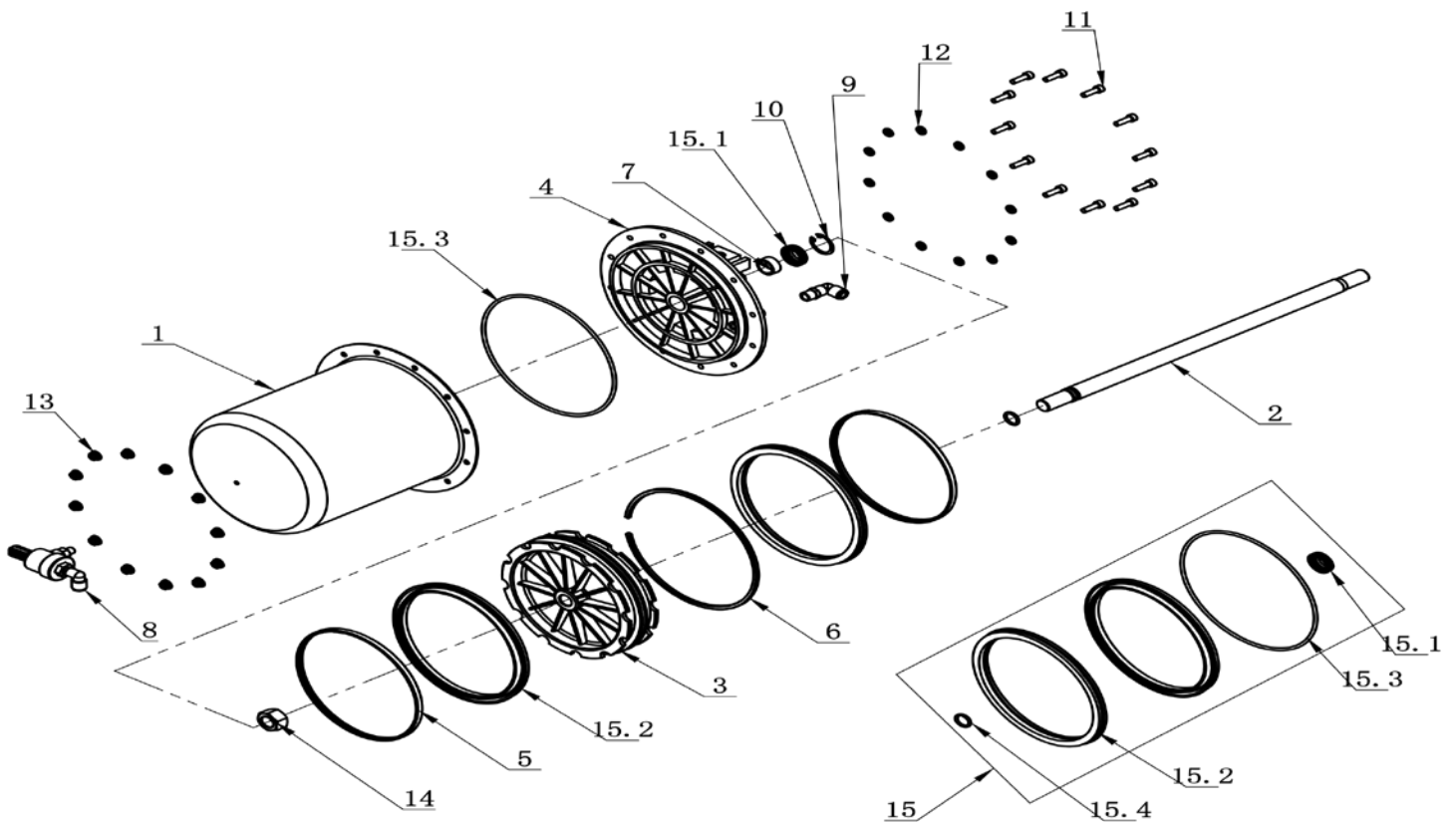
**MONTE DEMONTE PNEUS AUTOMATIQUE 10"-24"
1 VITESSE****AUTOMATIC TIRE CHANGER 10"-24" ONE-SPEED**

ITEM	DESCRIPTION.	QT. Y
40	ELASTIC CYLINDRICAL PIN, HEAVY	1
41	HEXANGULAR BOLT	1
42	CROSS PANHEAD TAPPING SCREW	4
43	FLAT WASHER	1
44	STANDARD SPRING WASHER	1
45	CROSS PANHEAD SCREW	1
46	HEXANGULAR BOLT	1
47	HEXANGULAR NUT	2
48	FLAT WASHER	2
49	STANDARD SPRING WASHER	2
50	CROSS PANHEAD SCREW	2
51	MALE STRAIGHT	2
52	MALE STRAIGHT	4
53	MALE RUN TEE	1
54	MALE BRANCH TEE	1
55	INSERT ELBOW $\Phi 8$, R1/8	1
56	PLASTIC PARTICLE SILENCER	6

DM 1000

MONTE DEMONTE PNEUS AUTOMATIQUE 10"-24" 1 VITESSE

AUTOMATIC TIRE CHANGER 10"-24" ONE-SPEED

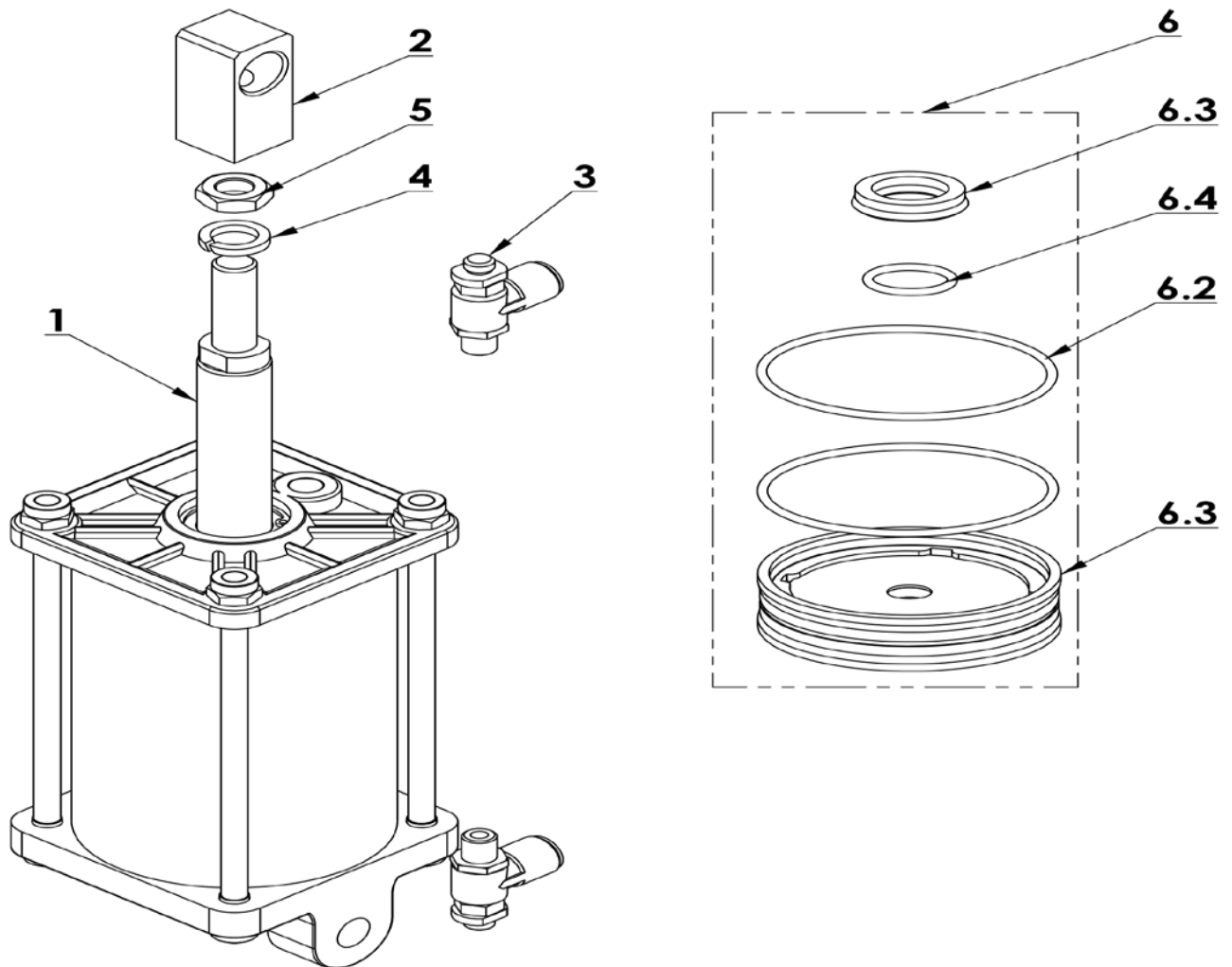


ITEM	DESCRIPTION.	QT. Y
1	CYLINDER BODY	1
2	CYLINDER PISTON ROD	1
3	PISTON	1
4	CYLINDER COVER	1
5	CLAMP RING	2
6	PISTON SUPPORT RING	1
7	GUIDER SPACER	1
8	QUICK DEFLATE VALVE ON BODY	1
9	INSERT ELBOW $\Phi 8, R1/4$	1
10	ELASTIC RETAINING RING B-TYPE	1
11	INNER HEXA CYLINDRICAL SCREW	12
12	FLAT WASHER	12
13	HEXA FLANGE NUT	12
14	NUT THIN TOOTH	1
15	CYCLINDER SEALING PARTS ASSEMBLY	1
15.1	SEAL-ROD, CYLNDR	1
15.2	Y-RING	2
15.3	O-RING G TYPE	1
15.4	HYDRAULIC-PNEUMATIC RUBBER O-RING G TYPE	1

DM 1000

MONTE DEMONTE PNEUS AUTOMATIQUE 10"-24" 1 VITESSE

AUTOMATIC TIRE CHANGER 10"-24" ONE-SPEED

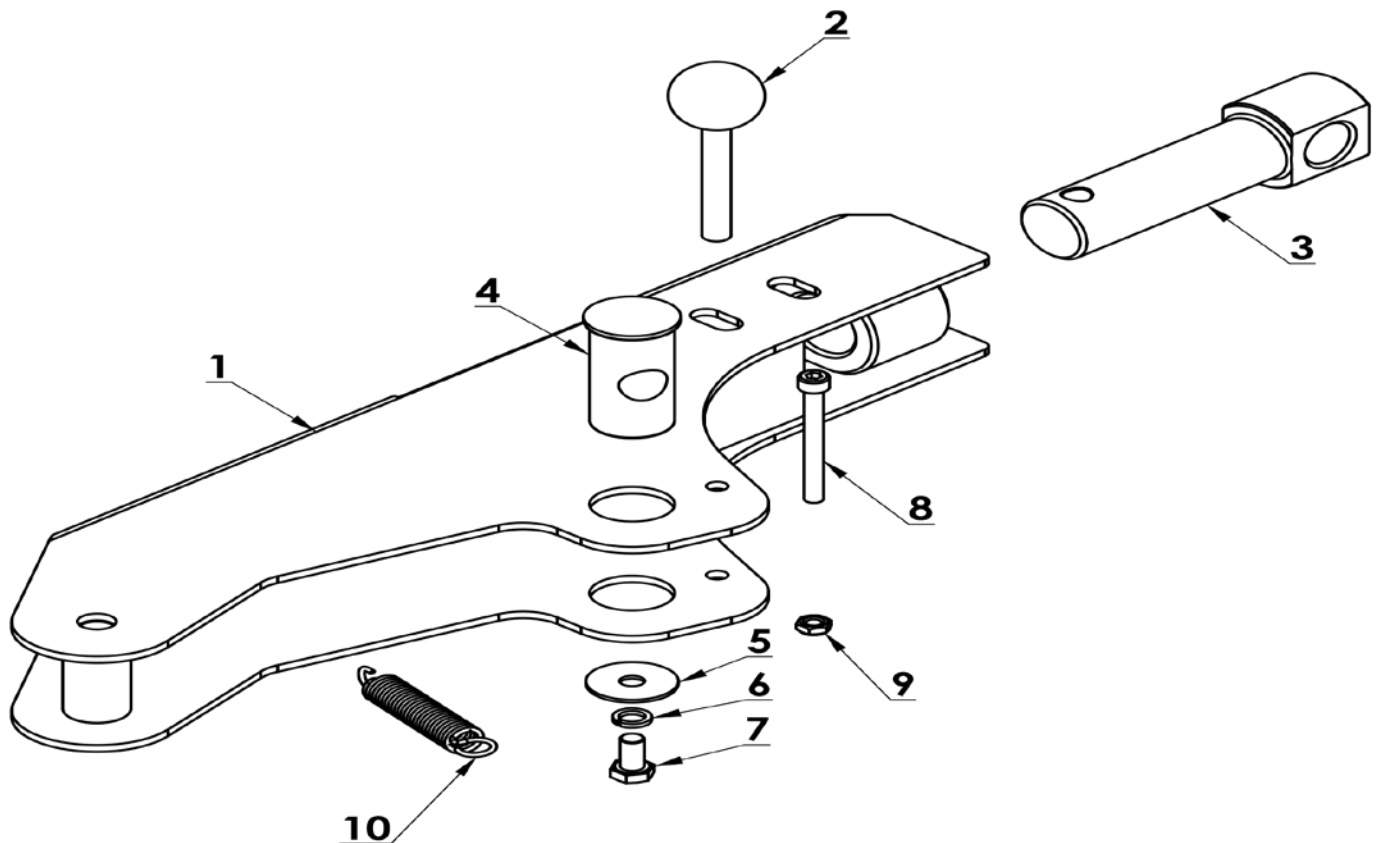


ITEM	DESCRIPTION.	QT. Y
1	CYLINDER ASSEMBLY	1
2	SHAFT CONNECTOR	1
3	ELBOW SPEED CONTROLLER	2
4	STANDARD SPRING WASHER	1
5	HEXANGULAR THIN NUT	1
6	CYCLINDER SEALING PARTS ASSEMBLY	1
6. 1	PISTON	1
6. 2	HYDRAULIC-PNEUMATIC RUBBER O-RING G TYPE	2
6. 3	SEAL-ROD, CYLNDR	1
6. 4	HYDRAULIC-PNEUMATIC RUBBER O-RING G TYPE	1

DM 1000

MONTE DEMONTE PNEUS AUTOMATIQUE 10"-24" 1 VITESSE

AUTOMATIC TIRE CHANGER 10"-24" ONE-SPEED

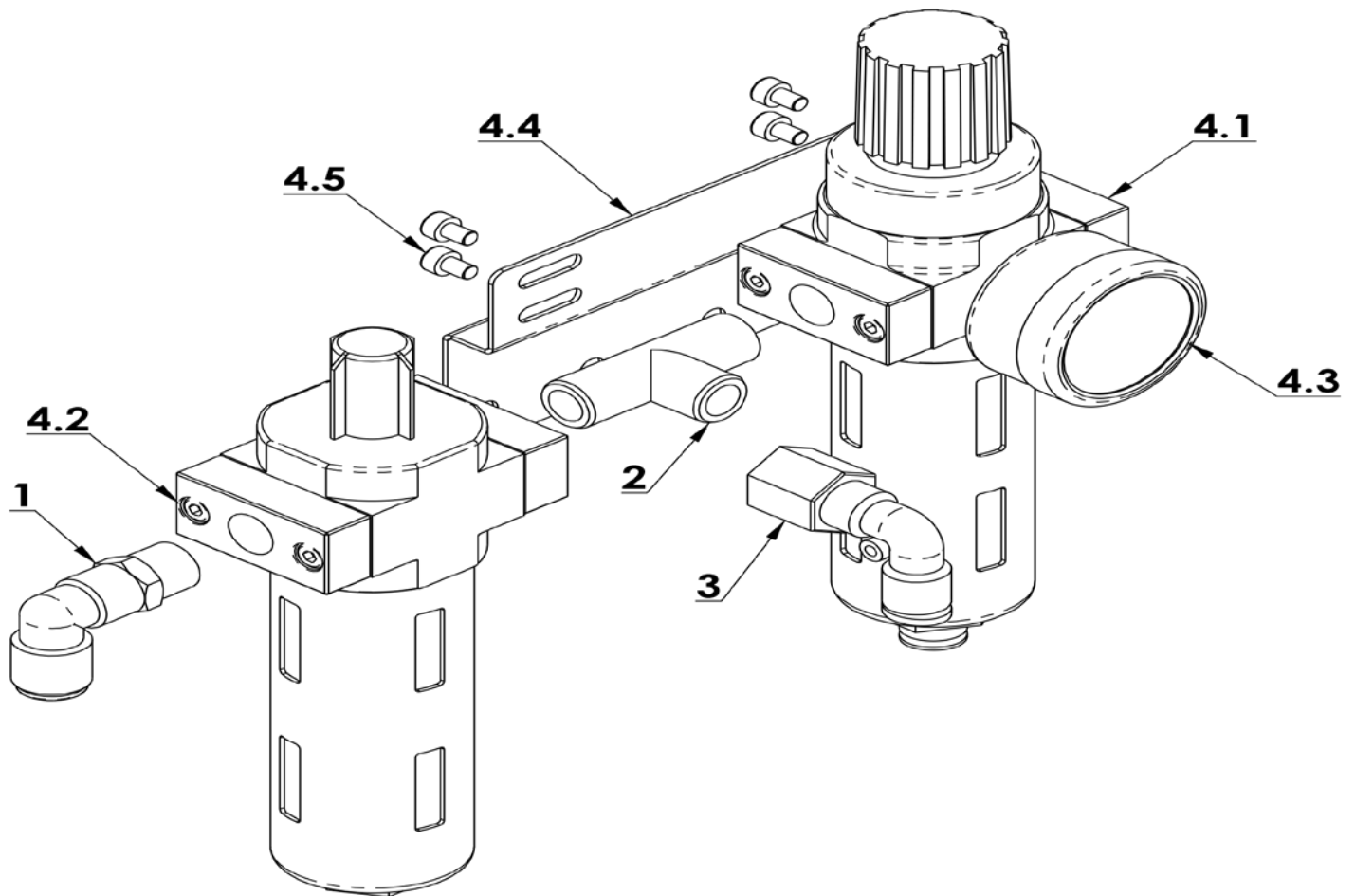


ITEM	DESCRIPTION.	QT. Y
1	BEAD BREAKER	1
2	PIN SHAFT	1
3	TURN ROD	1
4	CONNECT ROD	1
5	PAD	1
6	STANDARD SPRING WASHER	1
7	HEXANGULAR BOLT	1
8	INNER HEXA CYLINDRICAL SCREW	1
9	1-TYPE PREVAILING TORQUE TYPE HEXAGON LOCK NUT	1
10	SPRING	1

DM 1000

MONTE DEMONTE PNEUS AUTOMATIQUE 10"-24" 1 VITESSE

AUTOMATIC TIRE CHANGER 10"-24" ONE-SPEED

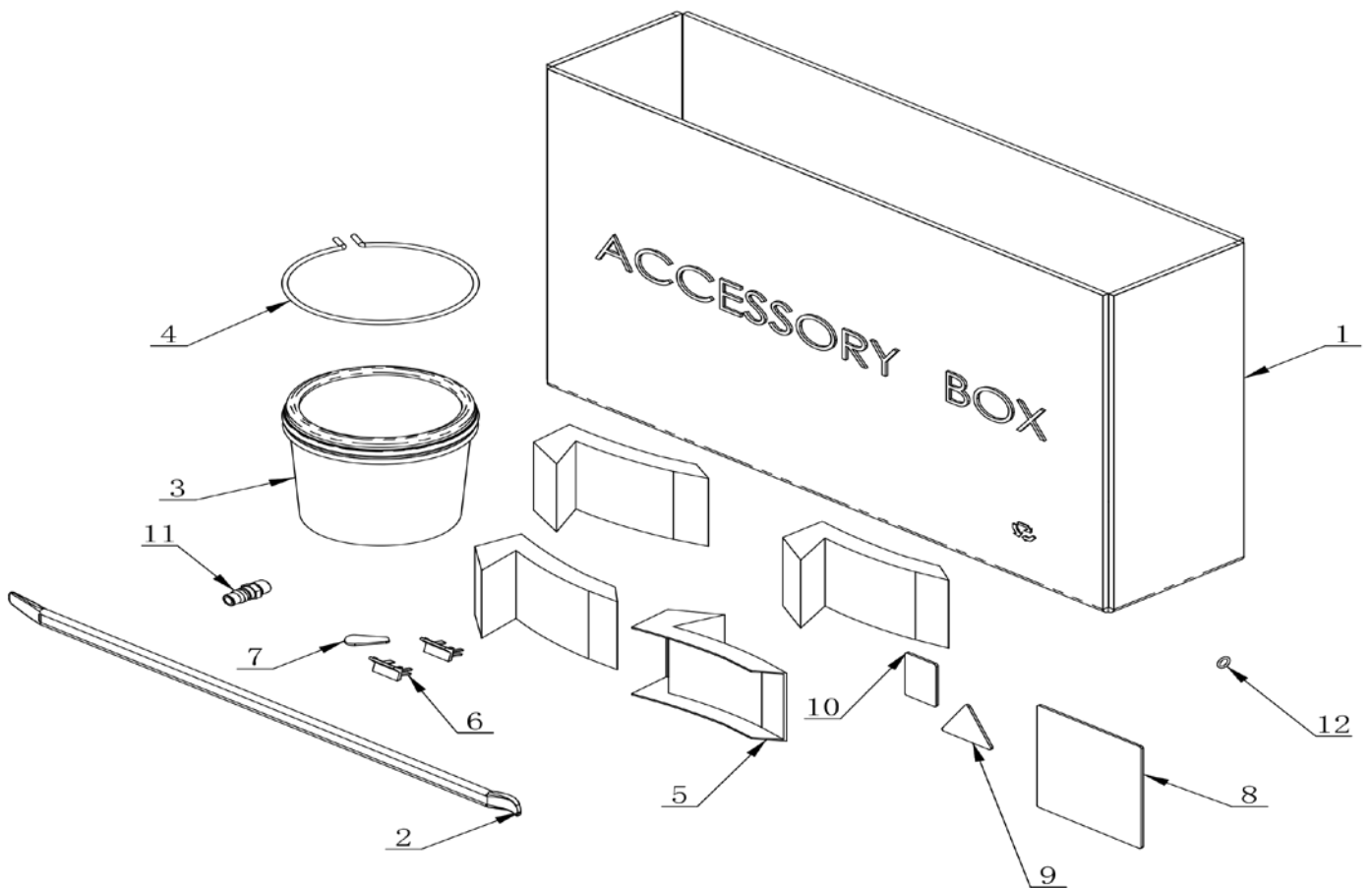


ITEM	DESCRIPTION.	QT. Y
1	INSERT ELBOW $\Phi 8$, R1/4	1
2	FAMALE UNION TEE	1
3	INSERT ELBOW $\Phi 8$, R1/4	1
4	AIR REGULATOR	1
4. 1	PRESSURE ADJUST VALVE AND WATER CUP	1
4. 2	OIL CUP	1
4. 3	PRESSURE GAUGE	1
4. 4	AIR REGULATOR BRACKET	1
4. 5	INNER HEXA CYLINDRICAL SCREW	4

DM 1000

MONTE DEMONTE PNEUS AUTOMATIQUE 10"-24" 1 VITESSE

AUTOMATIC TIRE CHANGER 10"-24" ONE-SPEED



ITEM	DESCRIPTION.	QT. Y
1	ACCESSORY BOX	1
2	20 INCH CROWBAR	1
3	GREASE CONTAINER	1
4	BRACKET	1
5	CLAMP PROTECTION COVER	4
6	SHEATH	2
7	PLASTIC COVER	1
8	USER MANUAL	1
9	PASS CARD	1
10	GUARANTEE	1
11	AIR SUPPLY CONNECTOR	1
12	HYDRAULIC-PNEUMATIC RUBBER O-RING G TYPE	1